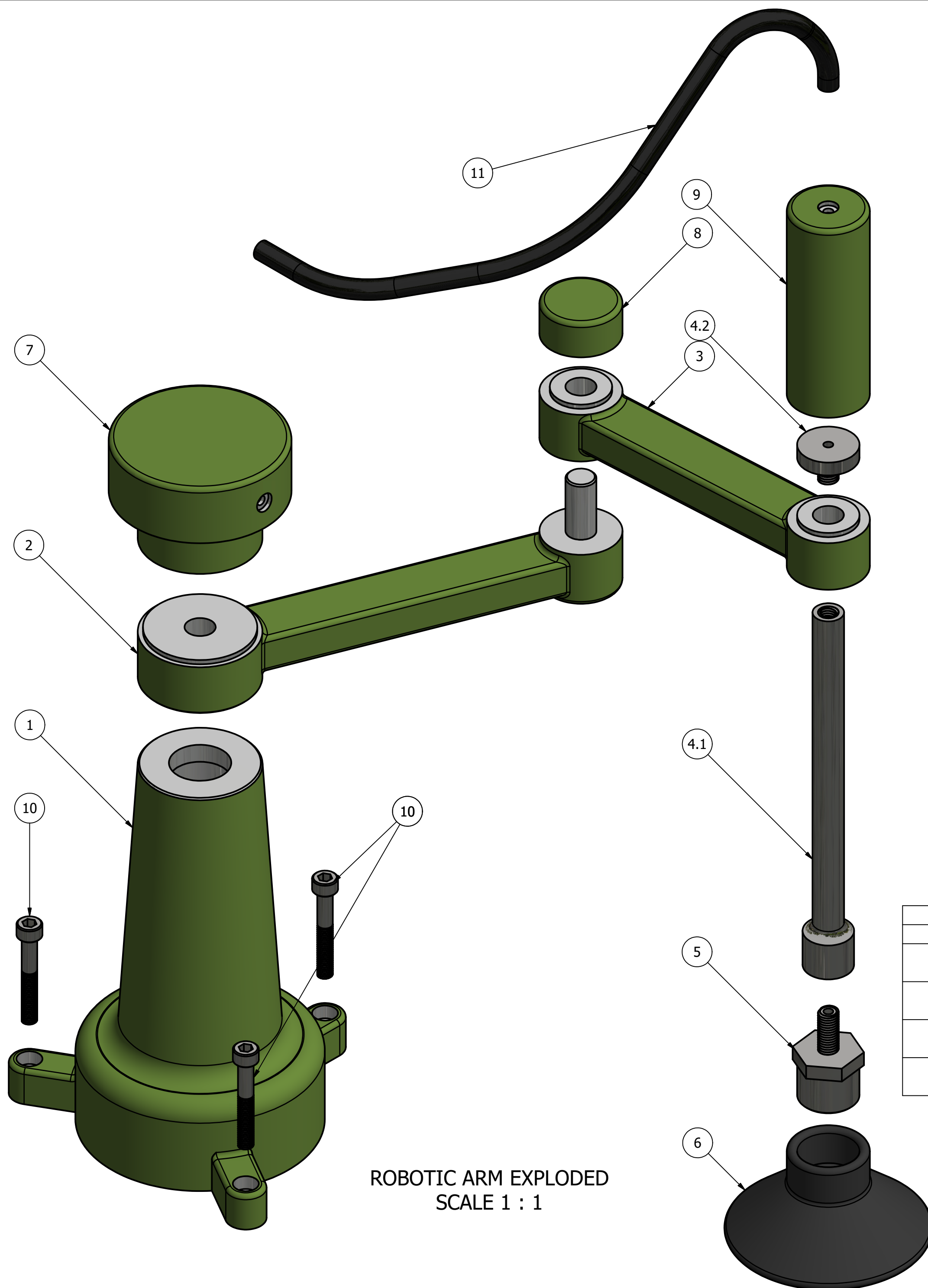
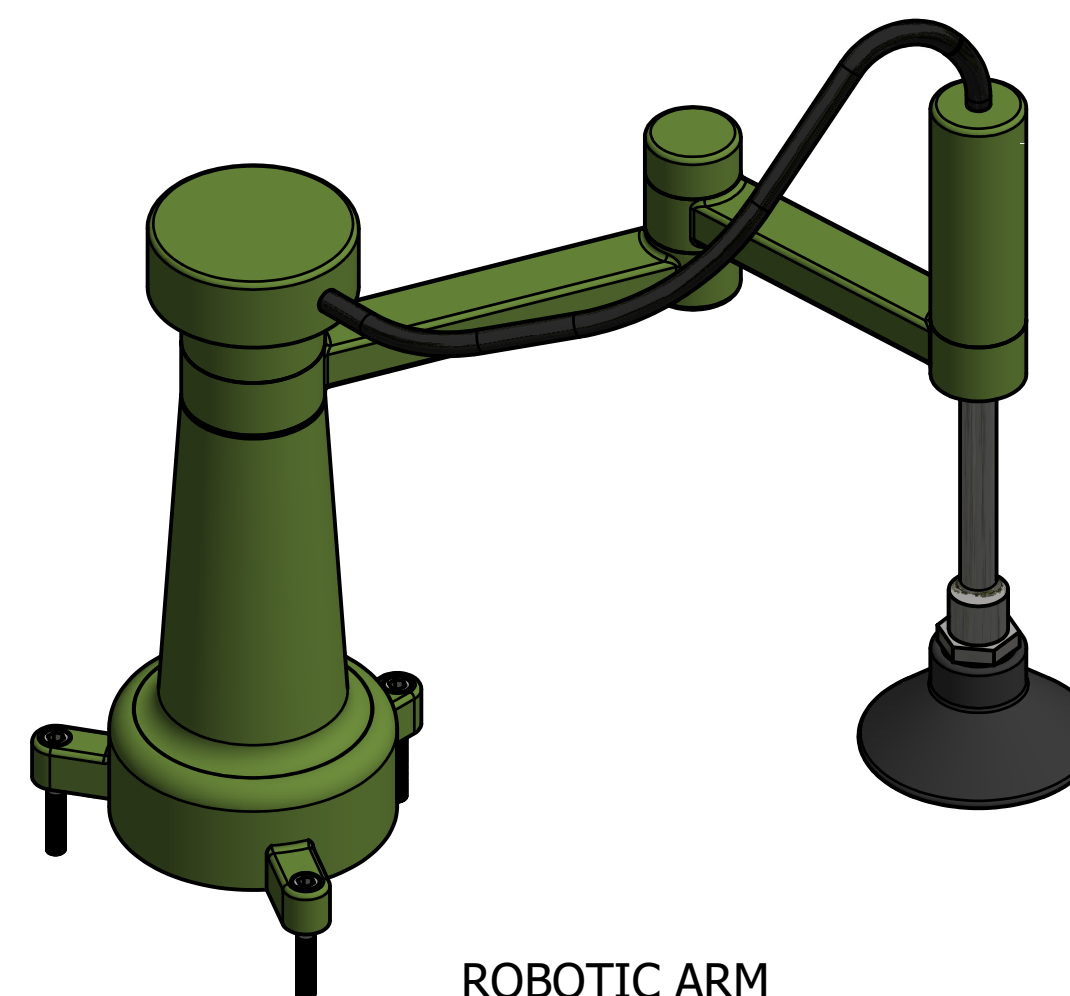


PARTS LIST				
ITEM	QTY	PART NUMBER	MATERIAL	DESCRIPTION
1	1	BASE	ALUMINUM	
2	1	ARM 1	ALUMINUM	
3	1	ARM 2	ALUMINUM	
4.1	1	SLIDING TUBE SHAFT	STAINLESS STEEL	
4.2	1	SLIDING TUBE PISTON	STAINLESS STEEL	
5	1	VACUUM CONNECTOR	STAINLESS STEEL	
6	1	VACUUM CUP	RUBBER	
7	1	BASE CAP	ALUMINUM	
8	1	ELBOW CAP	ALUMINUM	
9	1	VACUUM CAP	ALUMINUM	
10	3	CAP SCREW	STAINLESS STEEL	10-36 UNS, 1.25 LONG
11	1	VACUUM TUBE	RUBBER	ID 1/8 OD 1/4 9.29 LONG



ROBOTIC ARM EXPLODED
SCALE 1 : 1

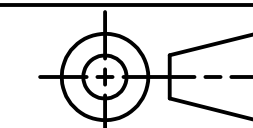


ROBOTIC ARM
SCALE 1 / 2

REVISION HISTORY				
REV	DESCRIPTION	DATE	SHEET	APPROVED
1	ON "BASE," HIGHT CHANGED FROM 3.00" TO 4.00"	3/27/2020	2	G. STROMMEN
2	ON "ARM 1" LENGTH CHANGED FROM 4.50" TO 5.00"	3/27/2020	2	G. STROMMEN
3	ON "ARM 2" LENGTH CHANGED FROM 3.50" TO 4.00"	3/27/2020	2	G. STROMMEN
4	ON "SLIDING TUBE" LENGTH CHANGED FROM 4.19" TO 5.19"	3/27/2020	3	G. STROMMEN

LEGEND:

- ∅ DIAMETER
- R RADIUS
- ° DEGREES
- ∇ DEPTH
- SPOTFACE



TOLERANCES UNLESS SPECIFIED:
DECIMAL INCHES
X = ±.020
XX = ±.010
XXX = ±.005
FRACTIONAL ±1/64"
ANGLE ±1 DEGREE
SURFACES 32 ✓

COURSE: DDGT241

INVENTOR DRAWING NAME
ROBOTIC ARM

FIG #: 1058

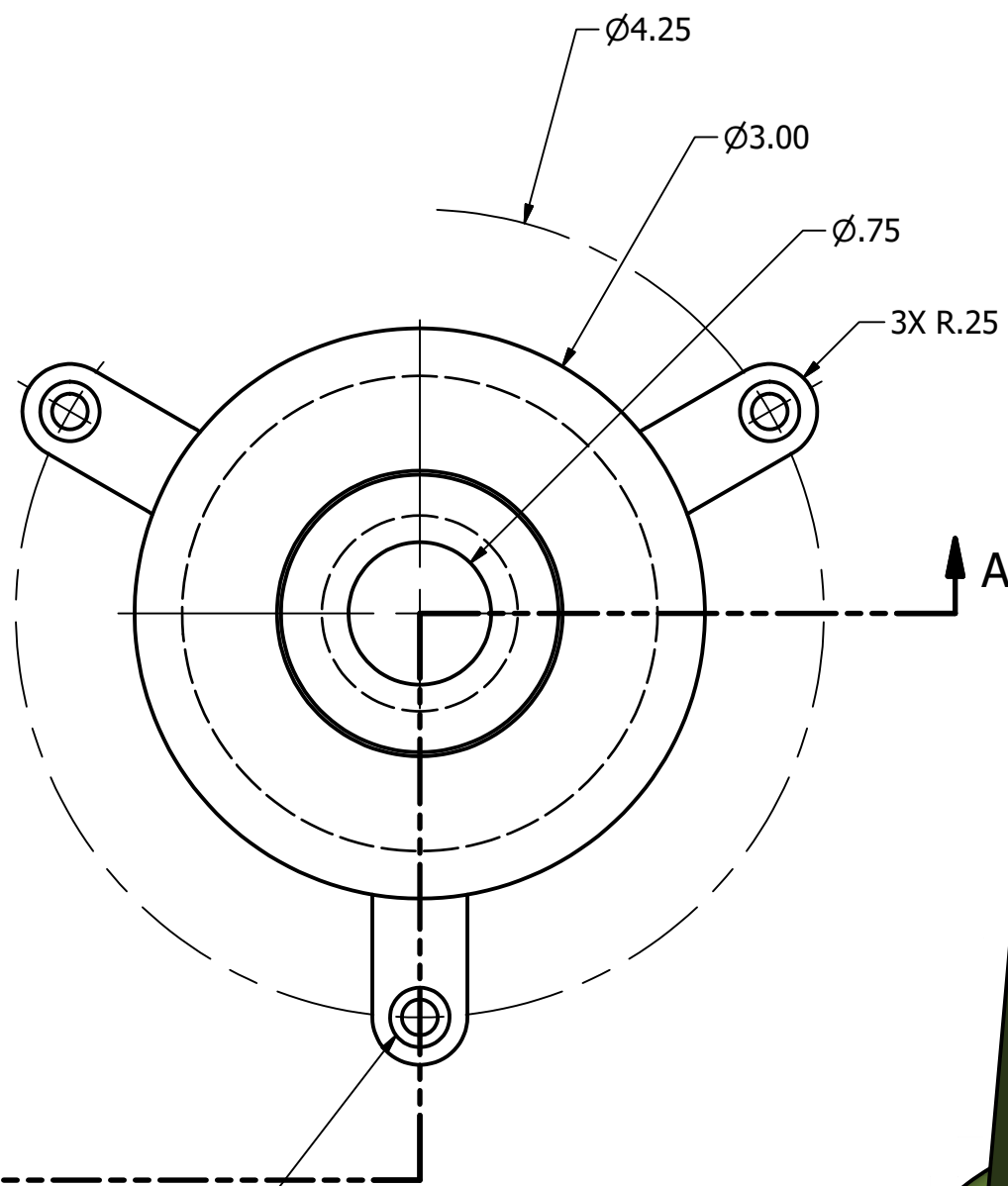
DRAFTER: W.VALLADARES

DATE: 3/8/2020

SCALE: AS NOTED

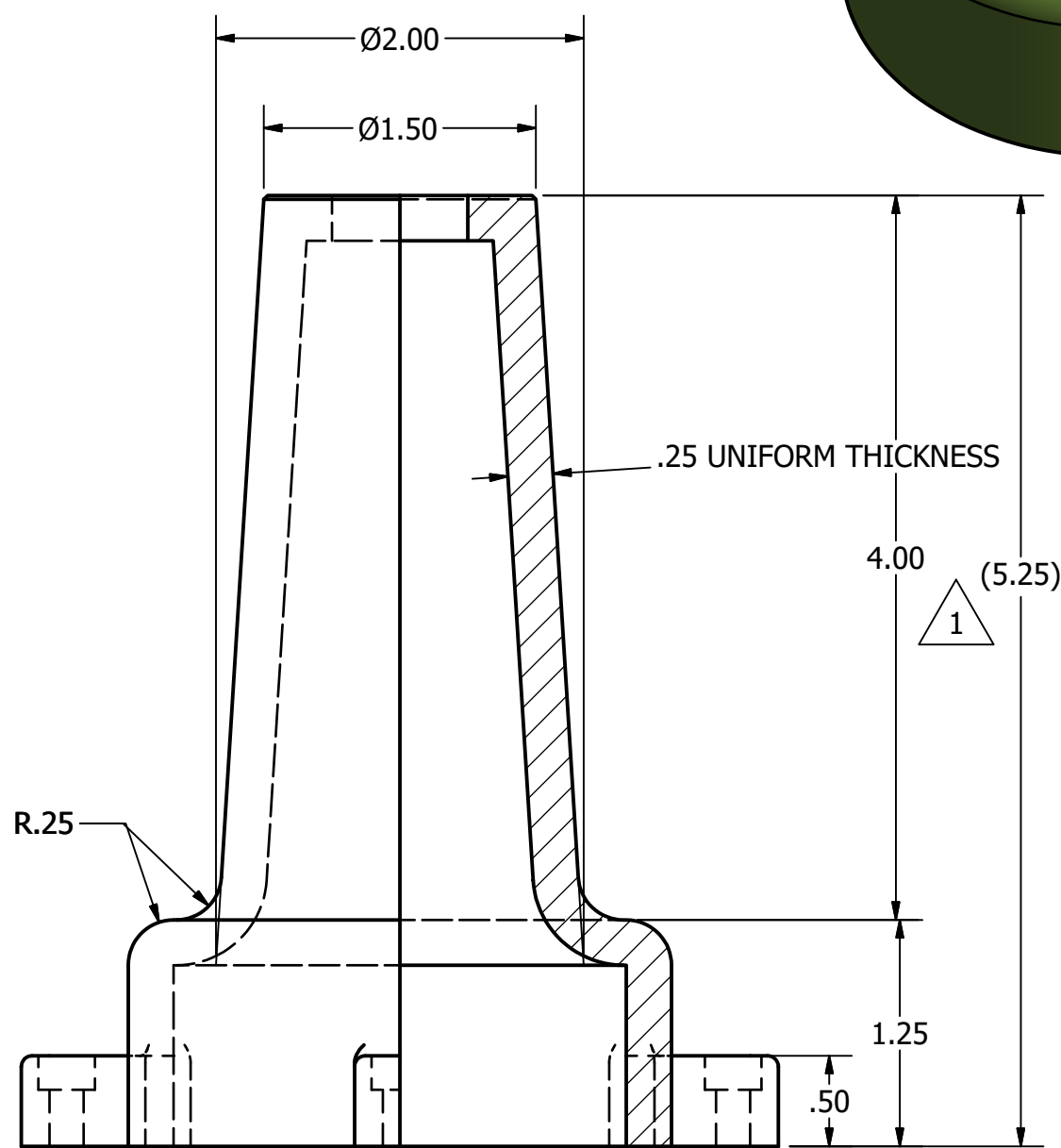
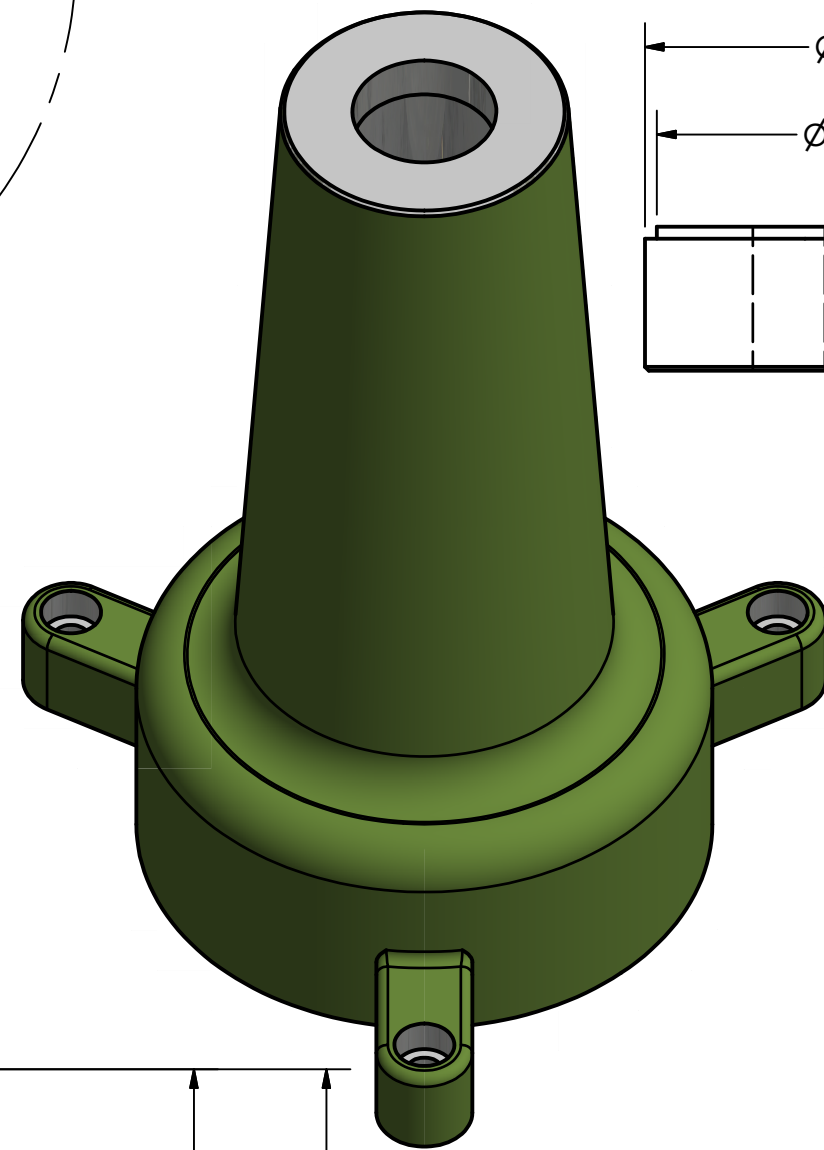
PAGE #: 1 OF 3

PARTS LIST		
ITEM	QTY	PART NUMBER
1	1	BASE
2	1	ARM 1
3	1	ARM 2

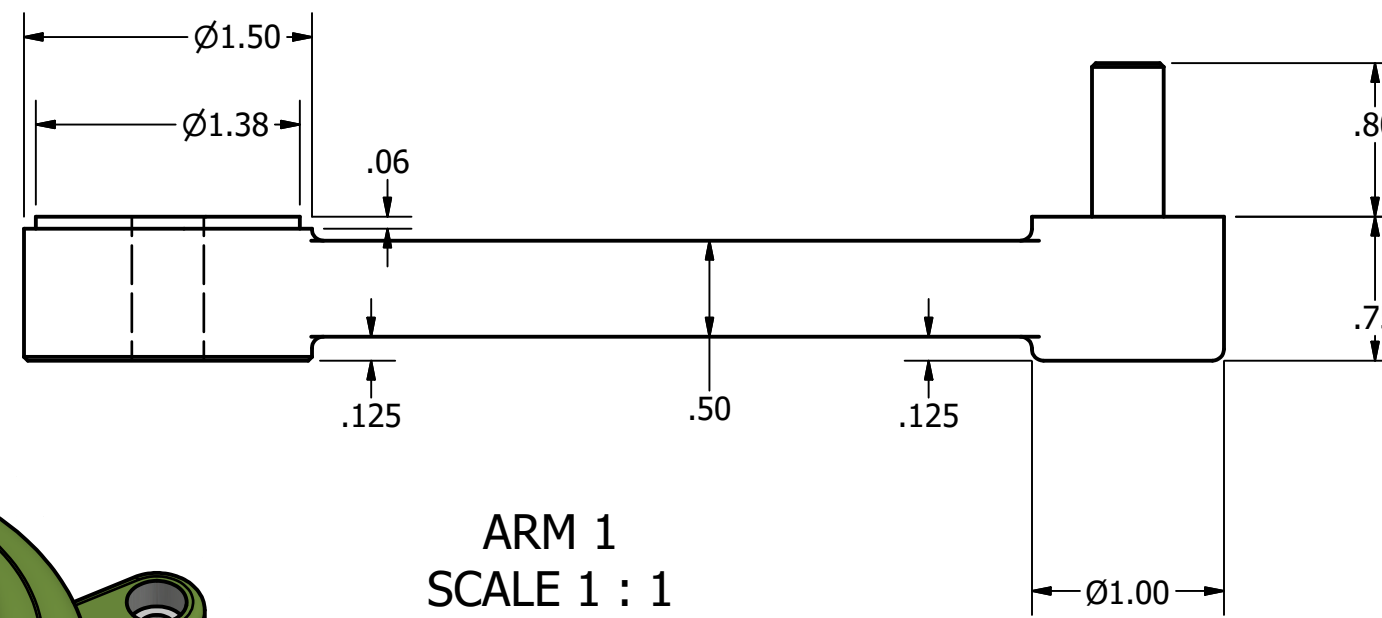
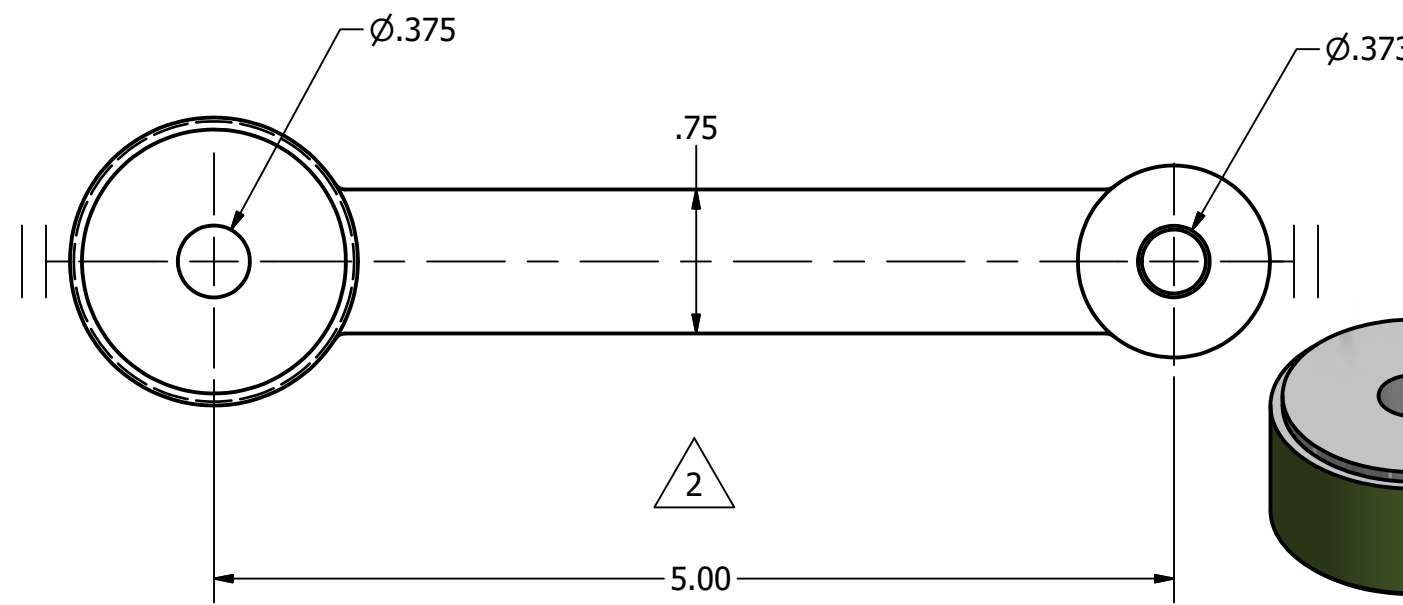


BASE
SCALE 1 : 1

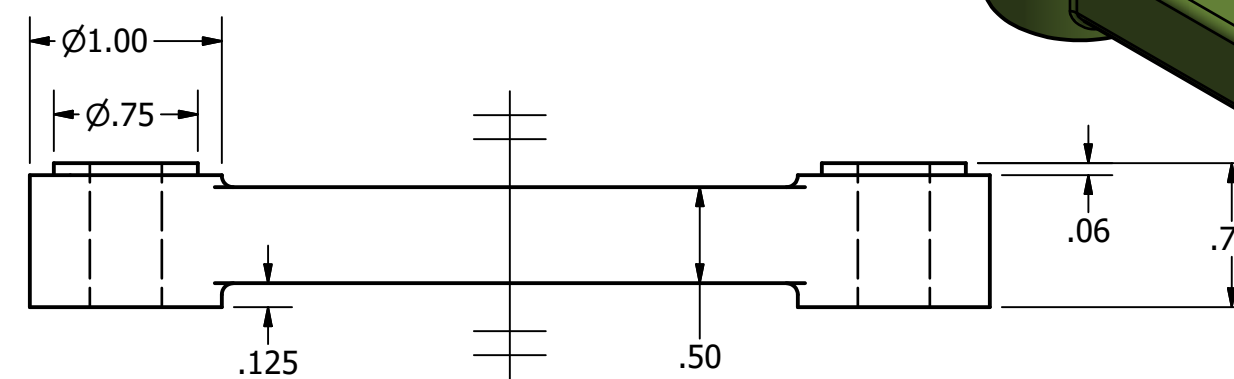
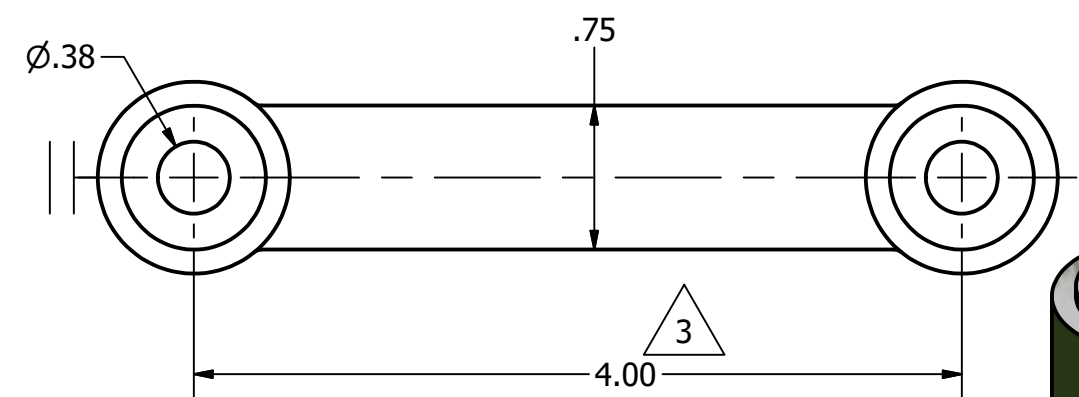
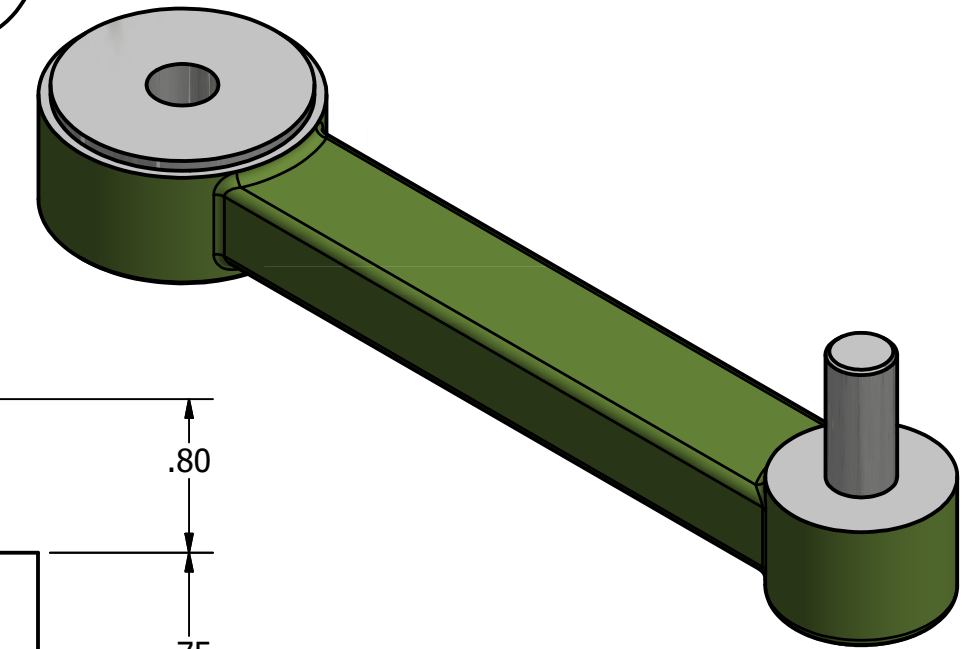
3X Ø.188
└ .313
▽.188
EQUALLY SPACED



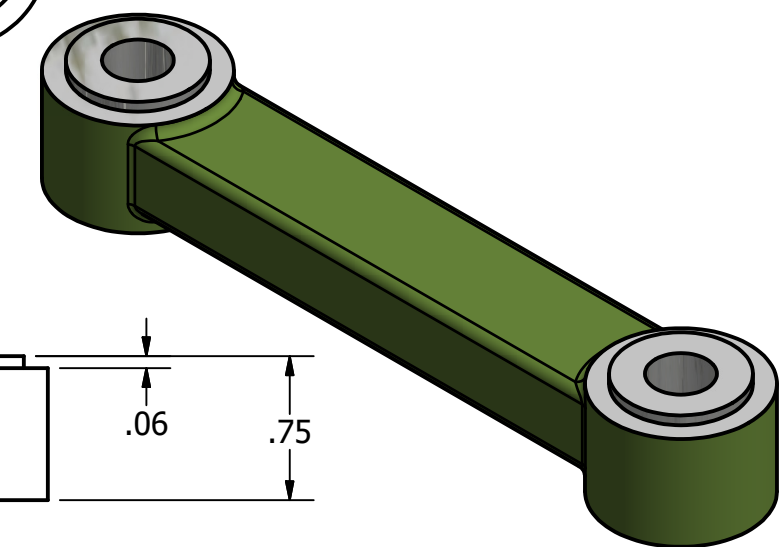
SECTION A-A
SCALE 1 : 1



ARM 1
SCALE 1 : 1

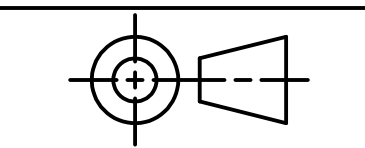


ARM 2
SCALE 1 : 1



LEGEND:

- Ø DIAMETER
- R RADIUS
- ° DEGREES
- ▽ DEPTH
- └ SPOTFACE



TOLERANCES UNLESS SPECIFIED:
DECIMAL INCHES
X = ±.020
XX = ±.010
XXX = ±.005
FRACTIONAL ±1/64"
ANGLE ±1 DEGREE
SURFACES 32 ✓

COURSE: DDGT241

INVENTOR DRAWING NAME
ROBOTIC ARM

FIG #: 1058

DRAFTER: W.VALLADARES

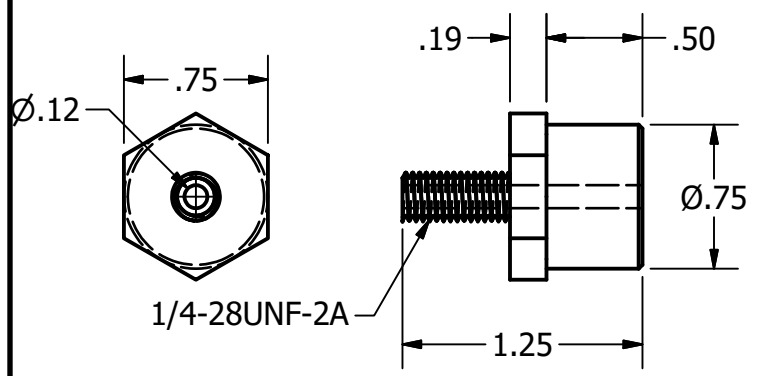
DATE: 3/8/2020

SCALE: AS NOTED

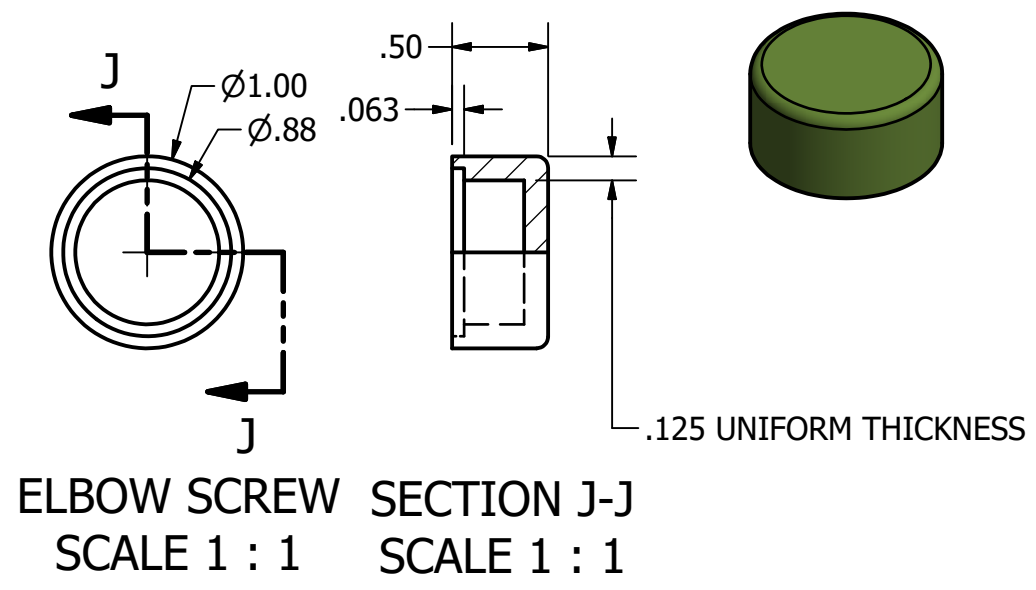
PAGE #: 2 OF 3

REVISION HISTORY			
REV	DESCRIPTION	DATE	APPROVED
1	ON "BASE," HIGHT CHANGED FROM 3.00" TO 4.00"	3/27/2020	G. STROMMEN
2	ON "ARM 1" LENGTH CHANGED FROM 4.50" TO 5.00"	3/27/2020	G. STROMMEN
3	ON "ARM 2" LENGTH CHANGED FROM 3.50" TO 4.00"	3/27/2020	G. STROMMEN

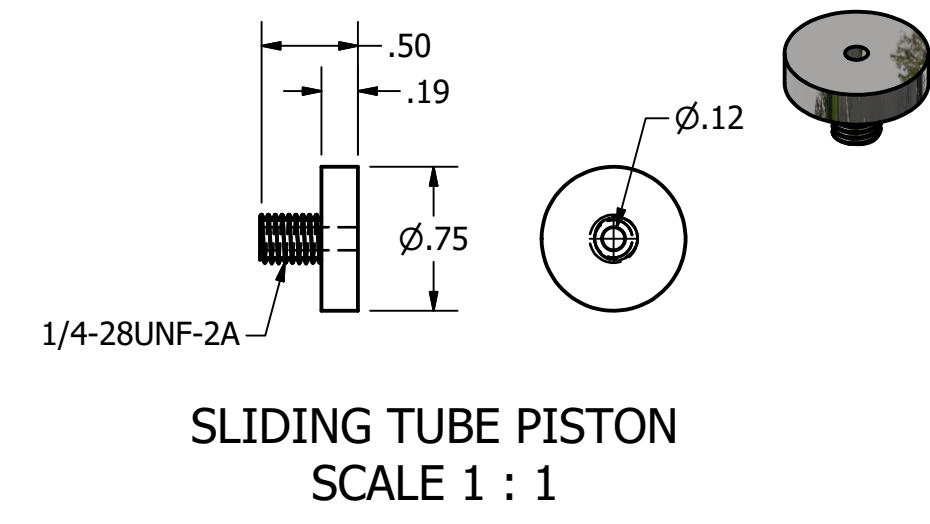
PARTS LIST		
ITEM	QTY	PART NUMBER
4.1	1	SLIDING TUBE SHAFT
4.2	1	SLIDING TUBE PISTON
5	1	VACUUM CONNECTOR
6	1	VACUUM CUP
9	1	VACUUM CAP



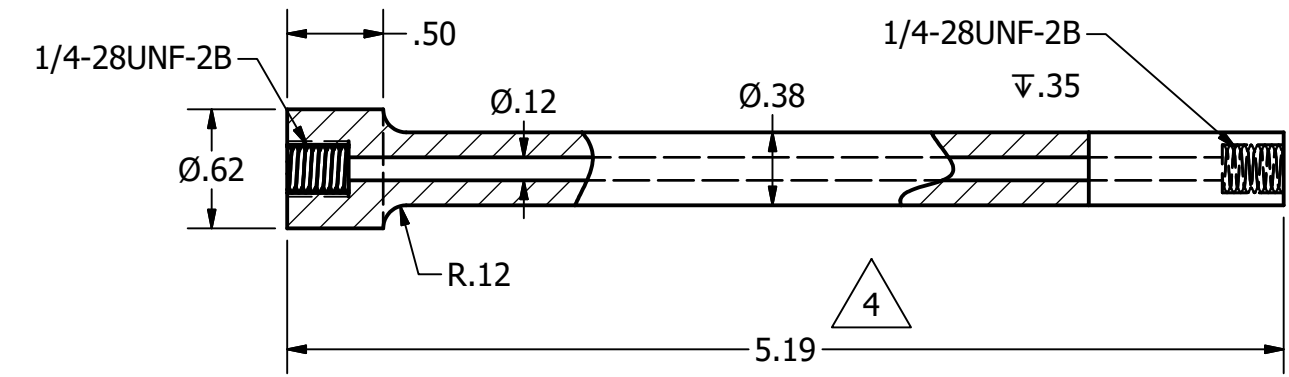
VACUUM CONNECTOR
SCALE 1 : 1



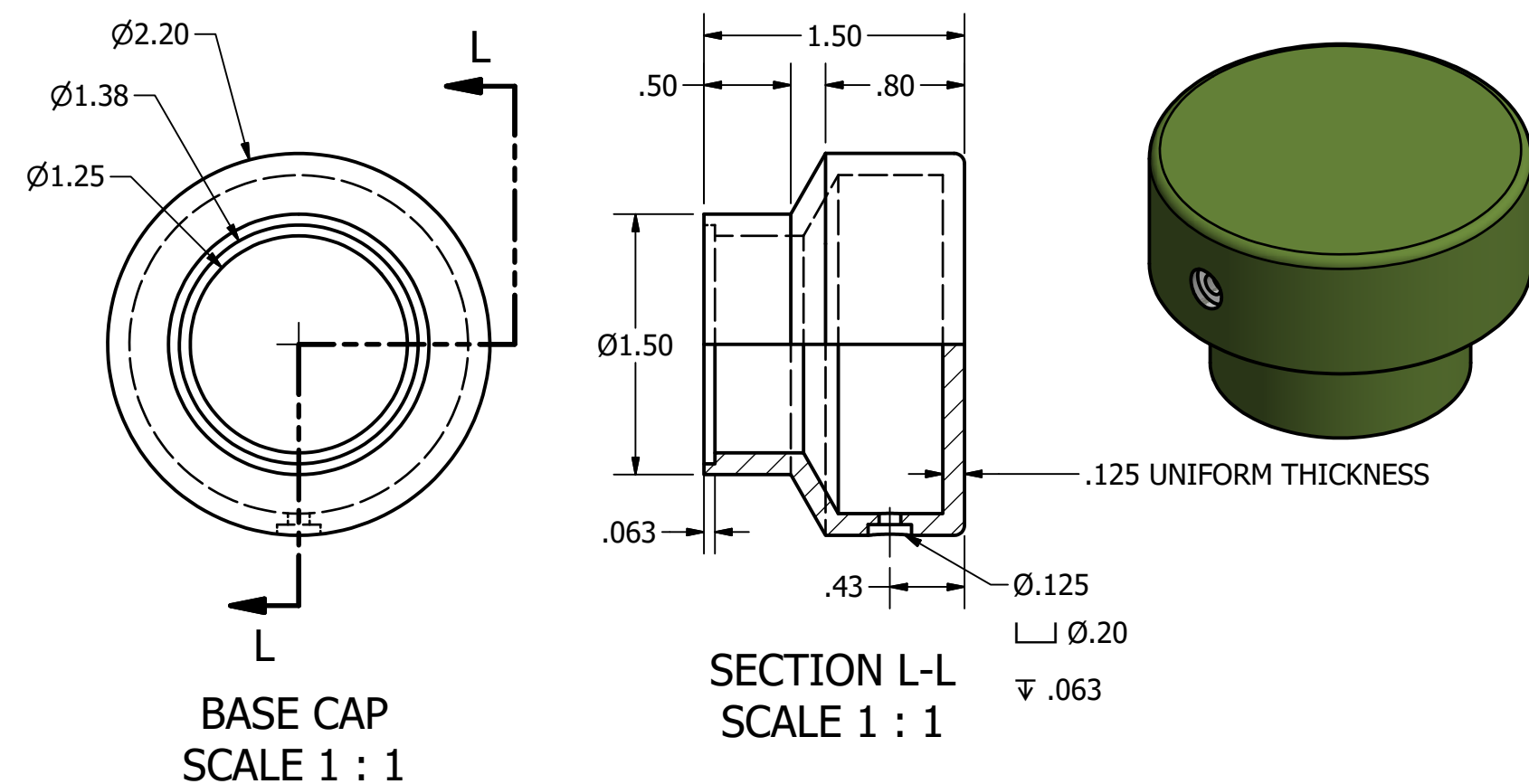
ELBOW SCREW SECTION J-J
SCALE 1 : 1



SLIDING TUBE PISTON
SCALE 1 : 1

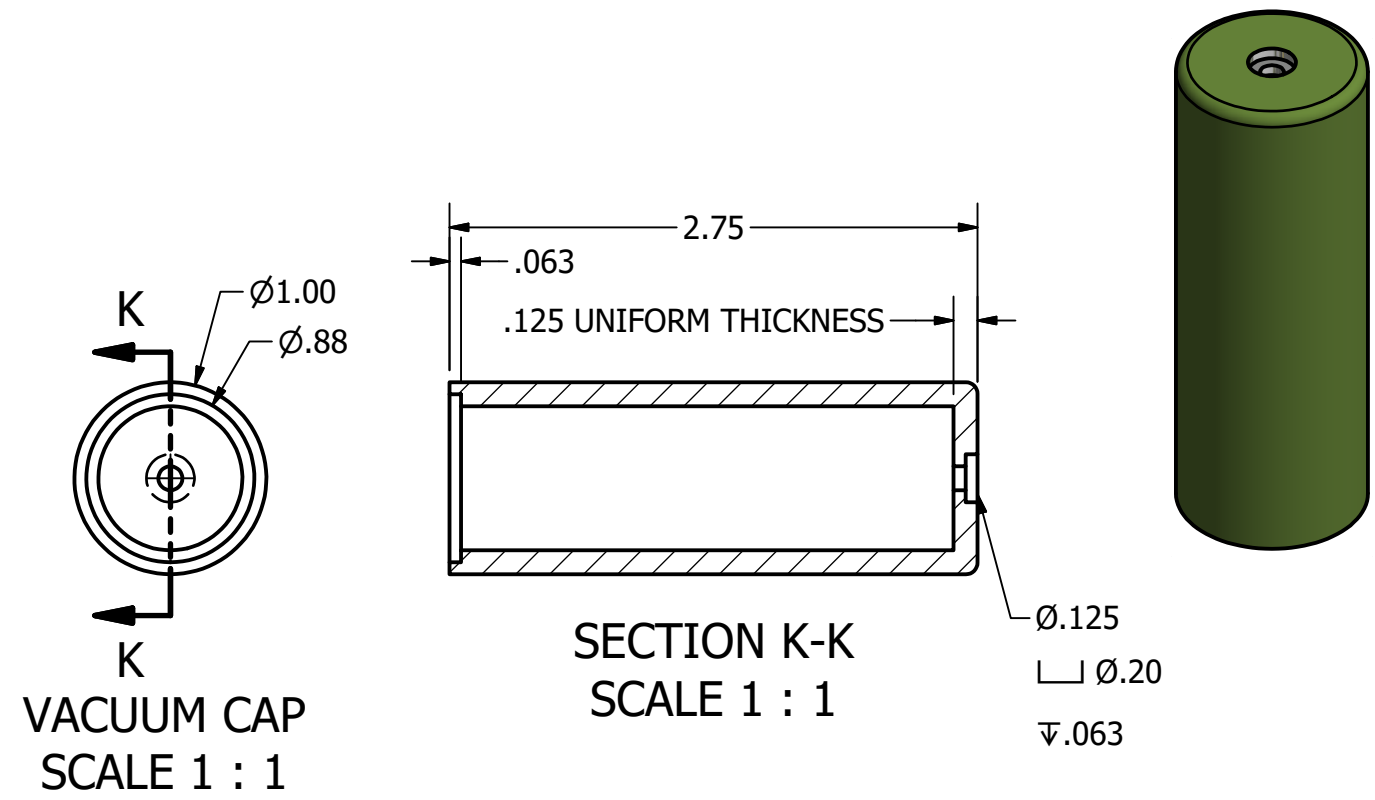


SLIDING TUBE SHAFT
SCALE 1 : 1



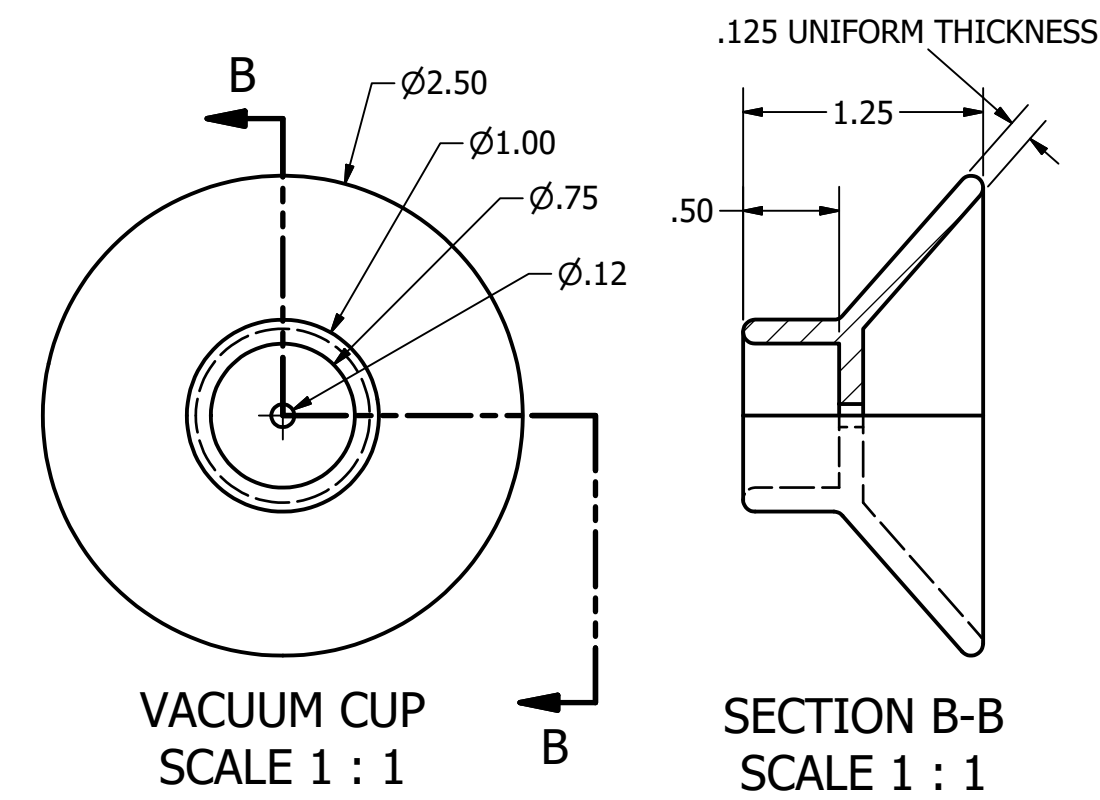
BASE CAP
SCALE 1 : 1

SECTION L-L
SCALE 1 : 1



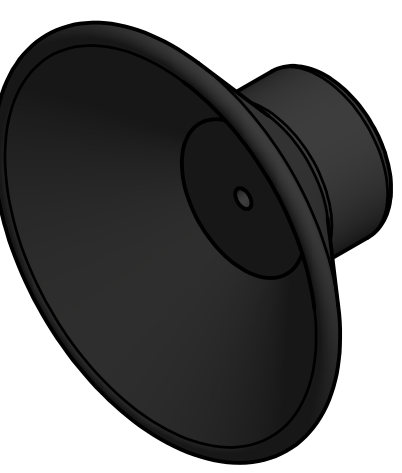
VACUUM CAP
SCALE 1 : 1

SECTION K-K
SCALE 1 : 1



VACUUM CUP
SCALE 1 : 1

SECTION B-B
SCALE 1 : 1



LEGEND:

- Ø DIAMETER
- R RADIUS
- ° DEGREES
- ∇ DEPTH
- ┌ SPOTFACE

TOLERANCES UNLESS SPECIFIED:
DECIMAL INCHES
X = ±.020
XX = ±.010
XXX = ±.005
FRACTIONAL ±1/64"
ANGLE ±1 DEGREE
SURFACES 32 ✓

COURSE: DDGT241

INVENTOR DRAWING NAME
ROBOTIC ARM

FIG #: 1058

DRAFTER: W.VALLADARES

DATE: 3/8/2020

SCALE: AS NOTED

PAGE #: 3 OF 3

REVISION HISTORY			
REV	DESCRIPTION	DATE	APPROVED
4	ON "SLIDING TUBE" LENGTH CHANGED FROM 4.19" TO 5.19"	3/27/2020	G. STROMMEN